



# ARCO CHAIR

D253

Working comfort like never before

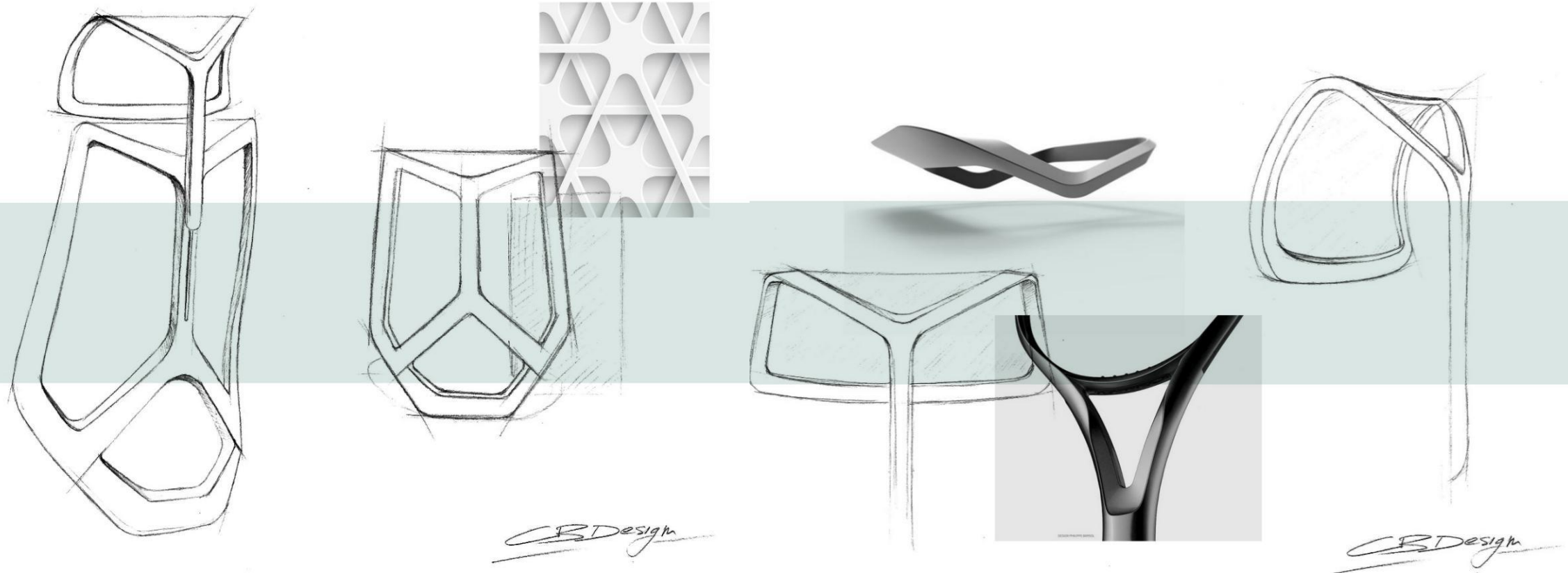


BIFMA  
INTERNATIONAL

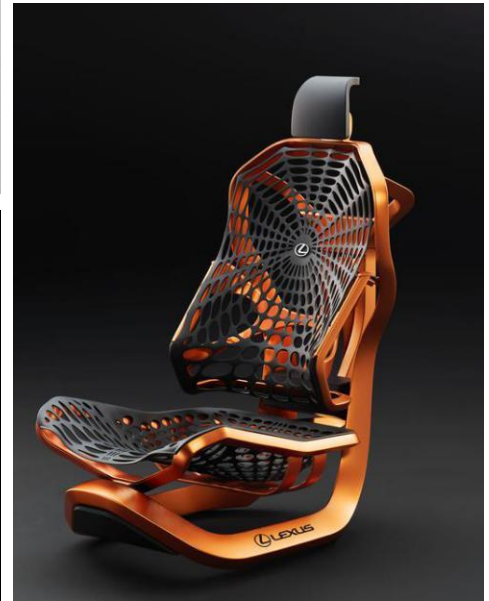
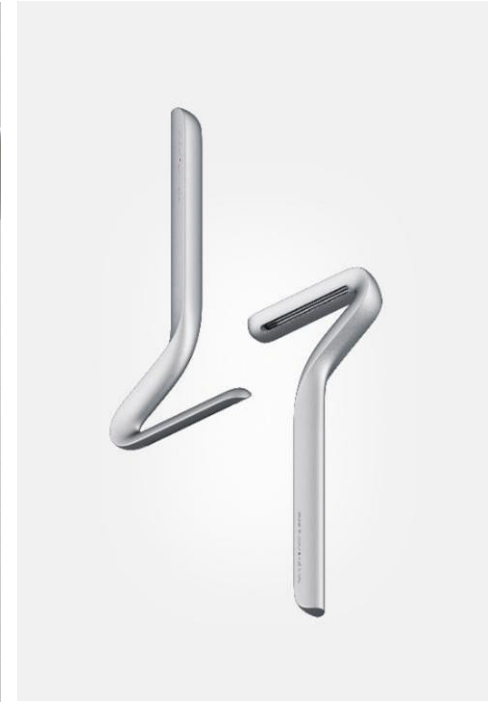
**b.one**

# The design

The strength of this task chair is its strong and recognizable character. A strong symbolic designed to achieve maximum ergonomics and expanded with a headrest and lumbar support perfectly adapted to its design.



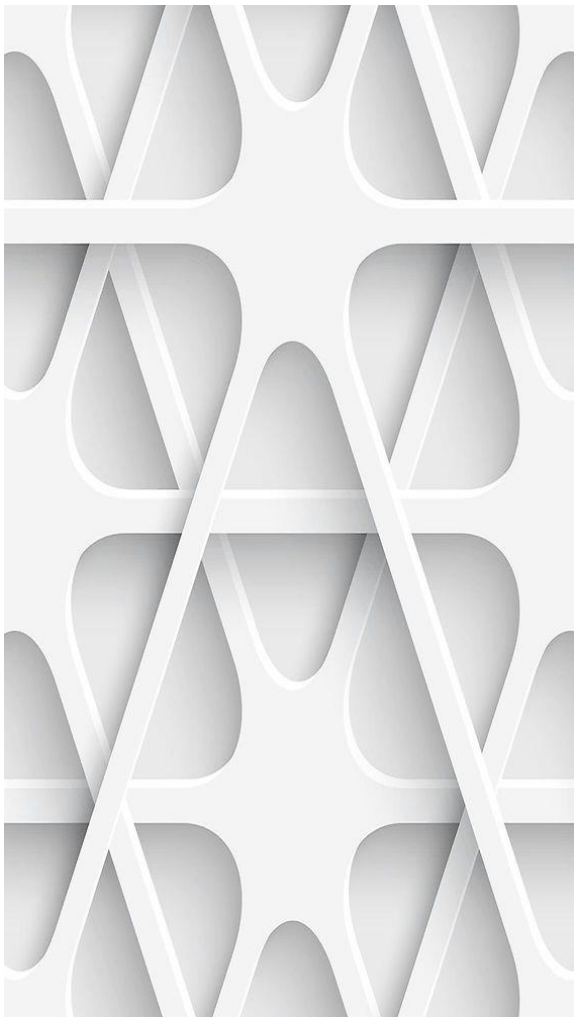
# inspiration







The backrest of ARCO chair was born from an in-depth study of car & aviation design world. After a deep research on the languages and the ergonomic solutions used on the seats of the most important modern transport vehicles, Mr.Bellini and his team developed a multi functional task chair that wanted to be a step ahead of the others on the market. The backrest design starts from a simple three-lines giving to the backrest its distinctive character.

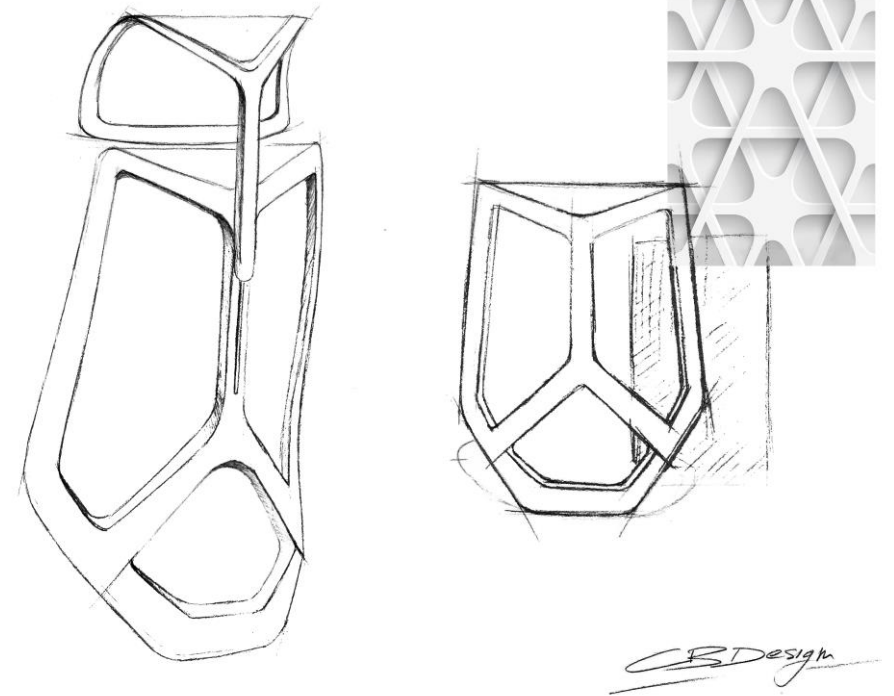


ARCO CHAIR could help you to build a workplace that truly reflects the characteristics of your employees and their work style.









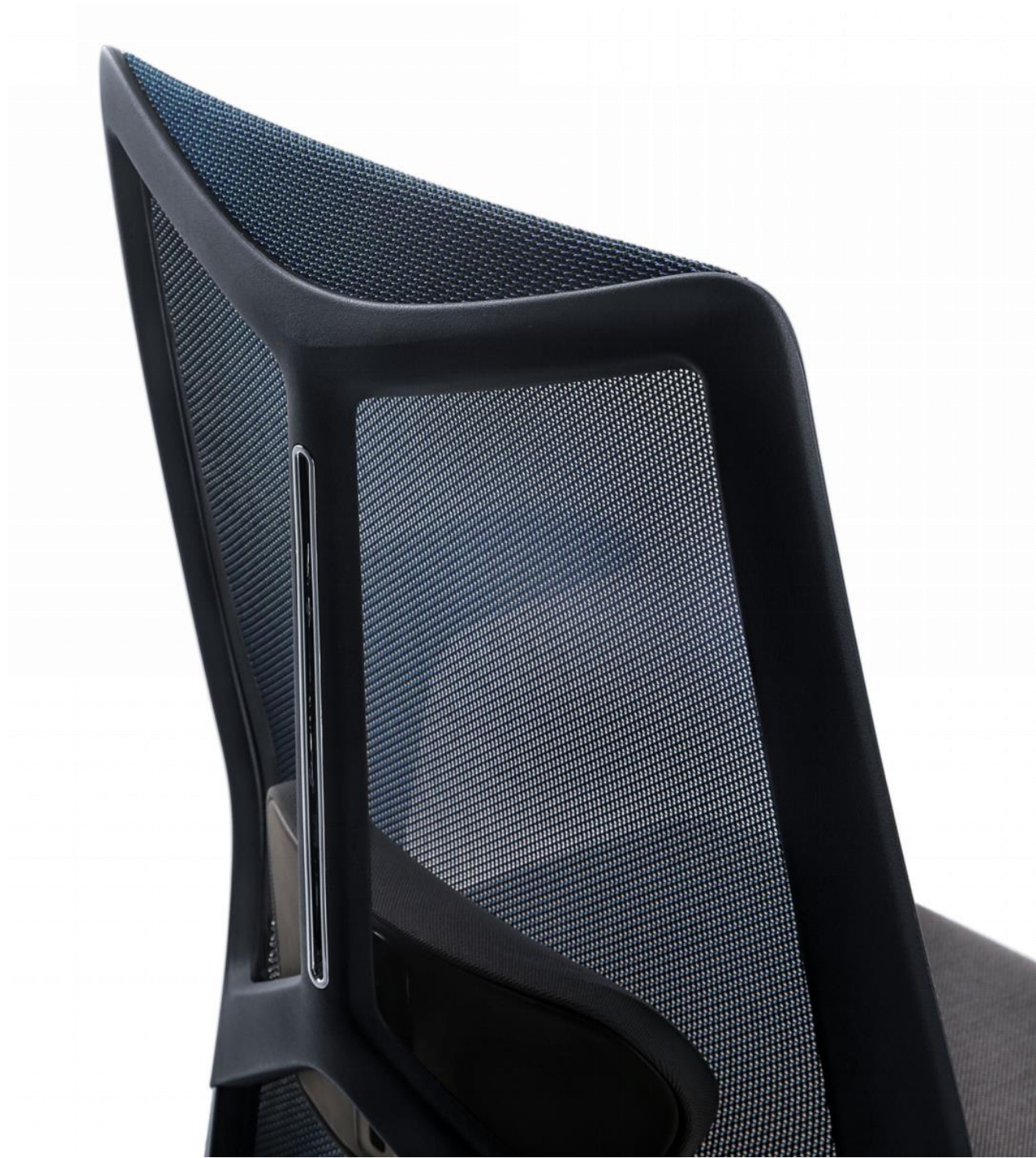
## Distinctive Character

ARCO's unique suspension back frame support system further enhances the ergonomic design of the chair while providing excellent shoulder and back support, it's a seating that combines the functionality and aesthetic.



## Midnight Blue Back Frame

The industrial design breakthrough of Midnight Blue color element adds brand new excitement apart from the traditional all-black office chair environment.



# **The ergonomic concept**





## Ergonomic Office Chair

Nowadays, many professions require people to work in the office, sitting in front of the computer all day long...Thus, the proper sitting position is extremely important. ARCO chair is ergonomically designed and adapted to the individual's unique physical characteristics and needs which provides great support for user's body that reduces the muscle tension from long hours sitting to ensure the 8-hour workday is effective.

The lumbar support is positioned to fit your body height. Adjusting lower lumbar to expand proper healthy S-Curve of your spine .

## Wide Armrests For Better Support

3D armrests with soft PU pad provide flexible and comfortable support for your arms



Up & Down



Forward &  
Backward



Left & Right

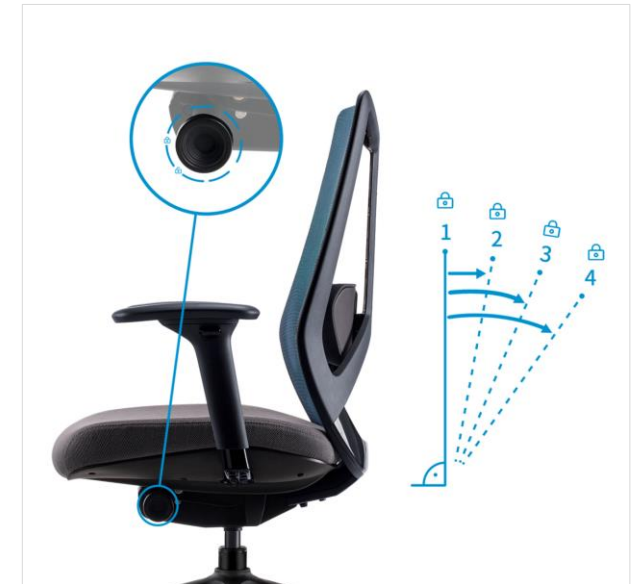






## Easy Locking Positions Adjustment

The ARCO mechanism enables smoother and more flexible switching of various operating conditions. You can easily complete the recline and locking by simply rotating the knob (in any direction) next to the seat.



## Three-dimensional wide length headrest

The new design of ARCO's headrest provides good support for user's head with a width of 38cm sufficient space for movement. The 11-position of 95mm stroke offers maximum comfort for users with various heights.





## Korean High Elastic Mesh

The backrest high-elastic mesh comes from WINTEX in South Korea. It's light and breathable, delicate and flexible for optimal back support.

## Dual-Direction Height Adjustment Lumbar Support

The ARCO lumbar support is made of high-resilience foam, which provides the comfortable and firm support to user's spine.

The height adjustment is 6-positions in 50mm long stroke that ensure lumbar support fits perfectly into users in various heights and prevents the pelvis from tilting.

↑  
50mm  
↓



# What's new?

Three-dimensional wide length headrest

11-position 95mm long stroke

Breathable WINTEX mesh

Distinctive character

Customize workspace

Dual direction height adjustment

6-position 50mm long stroke

Extreme Comfortable

High-resilience molded foam

Elegant armrest design

Support with comfort

Easy to adjust

4 locking positions

Nylon/Aluminum base

Stable structure, heavy load bearing





## Product Series

4 Trendy colors: Black , Grey, Blue, Orange. Each color fits all modern office with individual personality.



D253 Black



D253 Orange



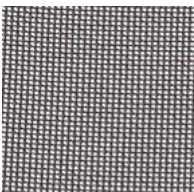
D253 Blue



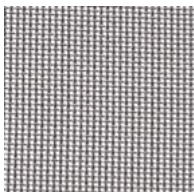
D253 Grey

# Array optional solution

## Backrest Mesh



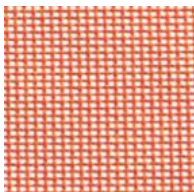
BlackFB2301



GreyFB2302



BlueFB2303



OrangeFB2304

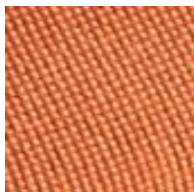
## Seat Fabric



BlackFC2701



GreyFC2702



OrangeFC2703

## Base



Aluminum base



Nylon Base

## Mechanism

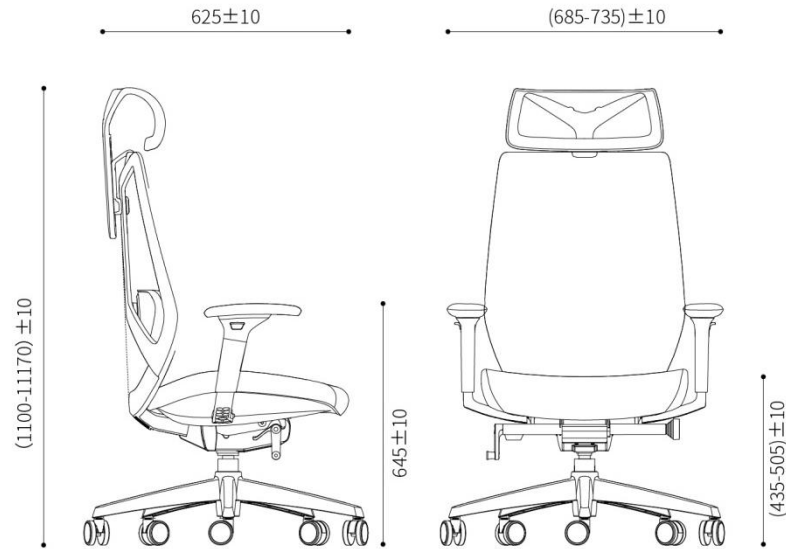


Synchro mechanism  
22° back tilting with 4  
locking positions



Simple mechanism  
22° back tilting with 3  
locking positions

## Size & Packing

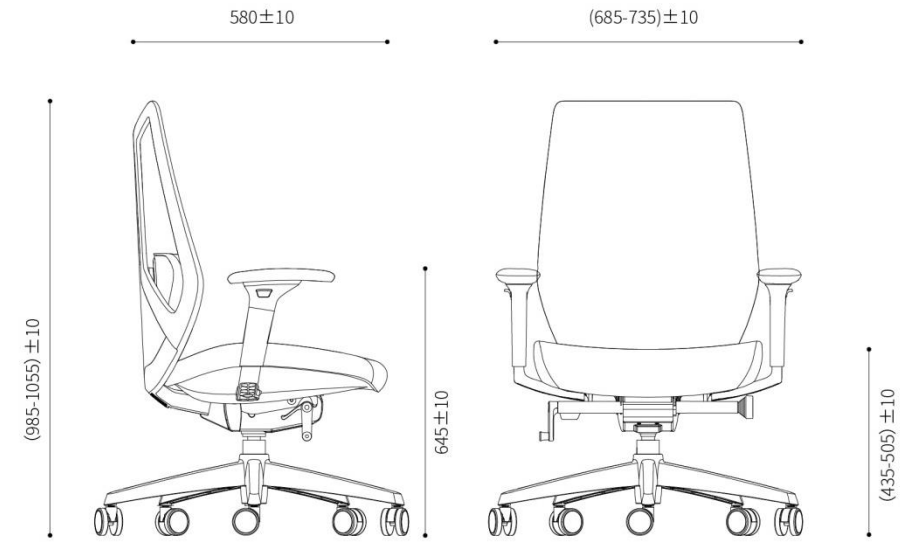


**Carton Size:** 34"L\*12-3/4"W\*26"H CBM:0.18

**Packing:** 1pcs per carton

**N.W.:** 18.2KG **G.W:** 20.8KG

20GP: 152PCS 40GP: 323PCS 40HQ: 372PCS



**Carton Size:** 34"L\*12-3/4"W\*26"H CBM:0.18

**Packing:** 1pcs per carton

**N.W.:** 17.4KG **G.W:** 20.0KG

20GP: 152PCS 40GP: 323PCS 40HQ: 372PCS





# CONTACT US

---

## B.one Industrial Park

Factory: No.1,3 Youyi Road, Tangxia Town, Dongguan, Guangdong, China

Tel: +86-769-8685 5575 Fax: +86-769-8685 6603

---

## Global Operations Office

A2101, Xintian CBC, Shixia North Road II, Futian District, Shenzhen, China

Tel: +86-755-8282 8666 Fax: +86-755-8371 7161

---

[www.cjfurniture.com.cn](http://www.cjfurniture.com.cn)

